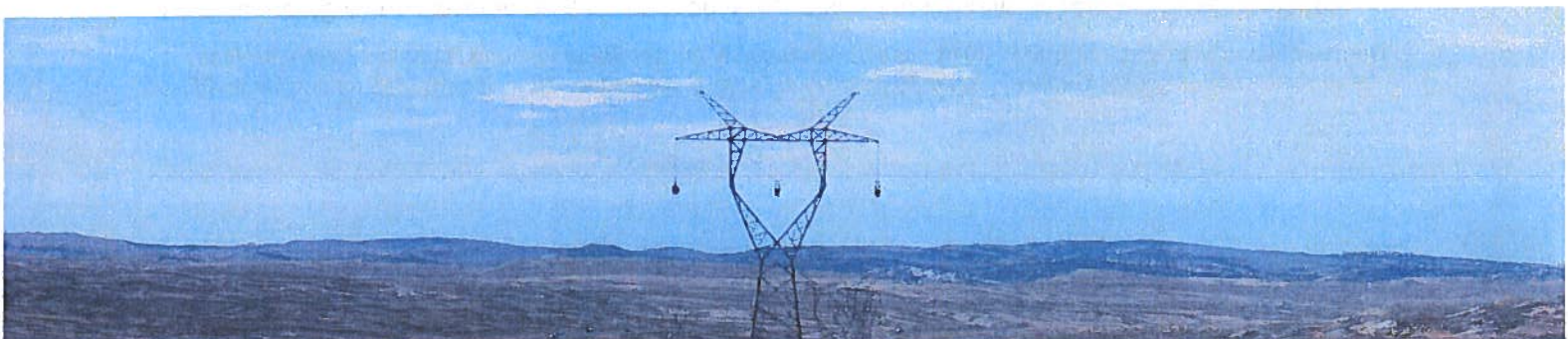
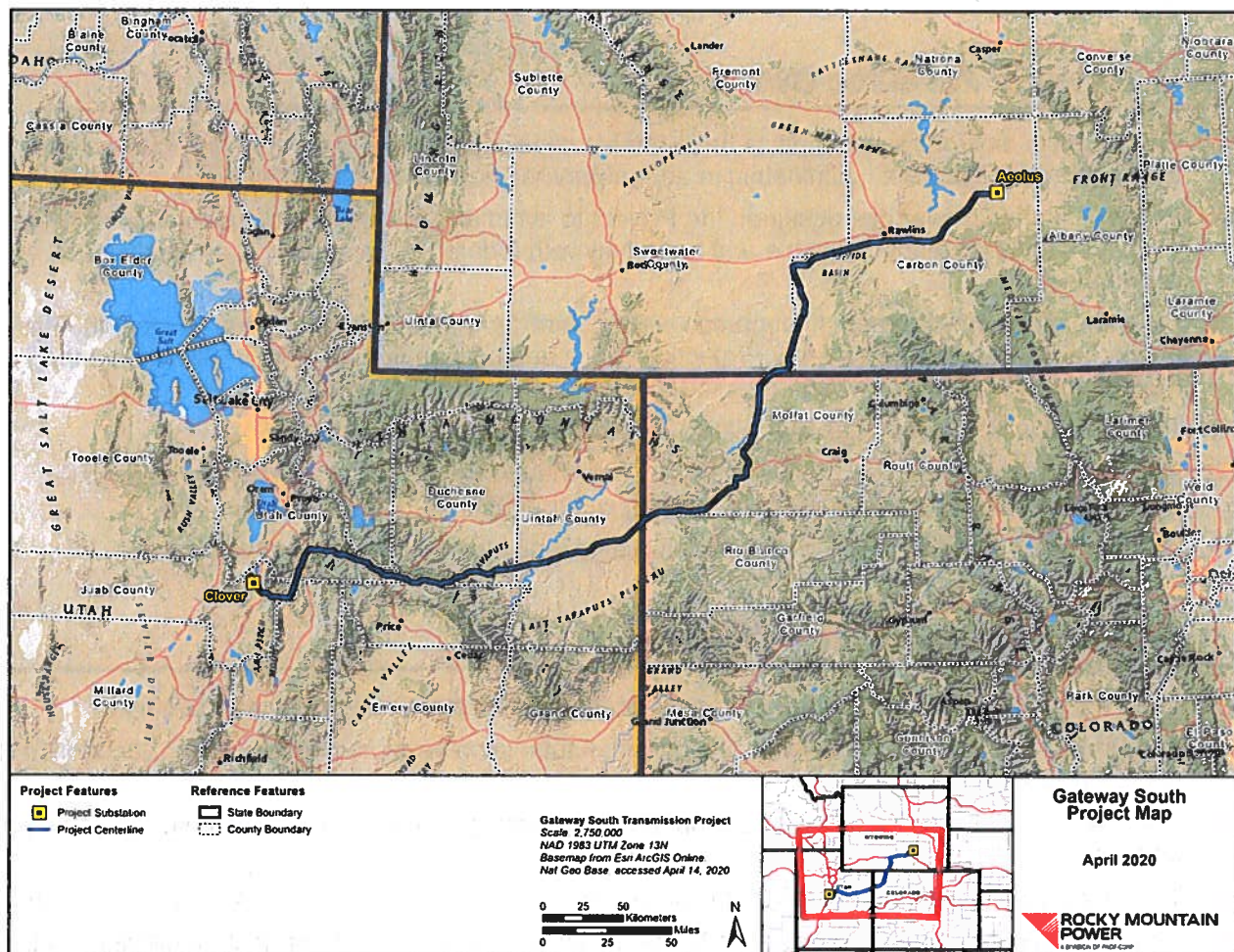


# Gateway South Project Description

The Gateway South Transmission Line Project is part of Rocky Mountain Power's larger transmission expansion program, called Energy Gateway, which adds new transmission lines that connect new and existing generation resources to customers throughout Rocky Mountain Power's service territory. Energy Gateway is composed of several large-scale projects that will address customers' increasing electric energy use and improve system reliability. The Gateway South Project consists of an approximately 420-mile-long, 500-kilovolt (kV) extra-high-voltage alternating current transmission line that will originate at the existing Aeolus substation northwest of Medicine Bow, Wyoming. From the Aeolus substation near Medicine Bow, the transmission line will progress southwest through portions of Carbon and Sweetwater Counties, then continue through western Colorado, and central Utah, ultimately terminating at the Clover substation near Mona, Utah. This Project is needed to meet growing energy demand, relieve transmission congestion, and improve the flow of electricity throughout the region by providing power from new and existing renewable (e.g., wind, solar, and storage) and thermal (e.g., gas, coal) sources.





# Environmental and Socioeconomic Overview

## Wyoming Industrial Siting

---

Rocky Mountain Power is in the process of applying for an Industrial Development and Siting Section 109 Permit to construct and operate the Gateway South Project pursuant to the Wyoming Industrial Development Information and Siting Act.

The purpose of this permitting process is to ensure that the Gateway South Project:

- complies with applicable laws;
- does not pose a threat of serious injury to the environment, the social and economic condition, or inhabitants or expected inhabitants in the Area of Site Influence;
- will not substantially impair the health, safety, or welfare of the inhabitants in the Area of Site Influence; and
- is supported by ample financial resources to decommission and reclaim the Project at the end of its operational life.

## Environmental Resource Overview

---

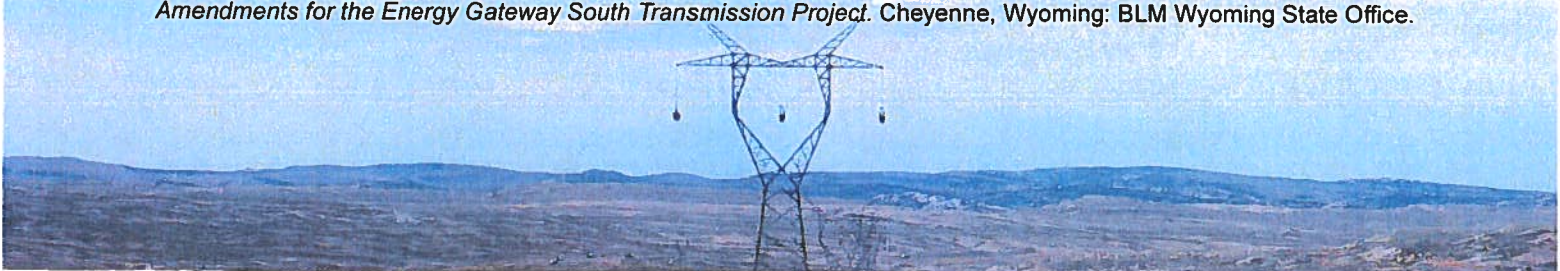
- The potential environmental impacts have been extensively studied to comply with the National Environmental Policy Act, culminating in a Final Environmental Impact Statement.<sup>1</sup>
- Rocky Mountain Power has designed the Project to avoid and minimize impacts to environmental resources to the extent practicable and to comply with federal, state, and local environmental regulations.
- Most impacts to environmental resources will be short-term and minor in nature. Rocky Mountain Power has created Environmental Protection Plans and mitigation plans that it will follow during Project activities to protect resources and mitigate unavoidable impacts.
- The Project will abide by seasonal wildlife restrictions during construction.
- Rocky Mountain Power will obtain water from commercial or municipal sources or make water use agreements with landowners with existing water rights.
- The Project is not anticipated to exceed air quality regulations during Project activities.

## Socioeconomic Resource Overview

---

- The Project is a \$508 million energy transmission infrastructure investment in Wyoming.
- The Project will generate more than \$97 million in total tax revenues over the 50-year economic life of the Project.
- Tax revenues from the Project will support local and state governments, including services like public education.
- The Project will create, on average, approximately 130 jobs over 29 months of construction activities.
- Up to \$6.2 million in impact assistance funds will be generated from the project for distribution by the Industrial Siting Council to affected areas and local governments to address unmitigated impacts.

<sup>1</sup> Bureau of Land Management (BLM). 2016. *Final Environmental Impact Statement and Proposed Land-use Plan Amendments for the Energy Gateway South Transmission Project*. Cheyenne, Wyoming: BLM Wyoming State Office.



# Gateway South Project in Wyoming

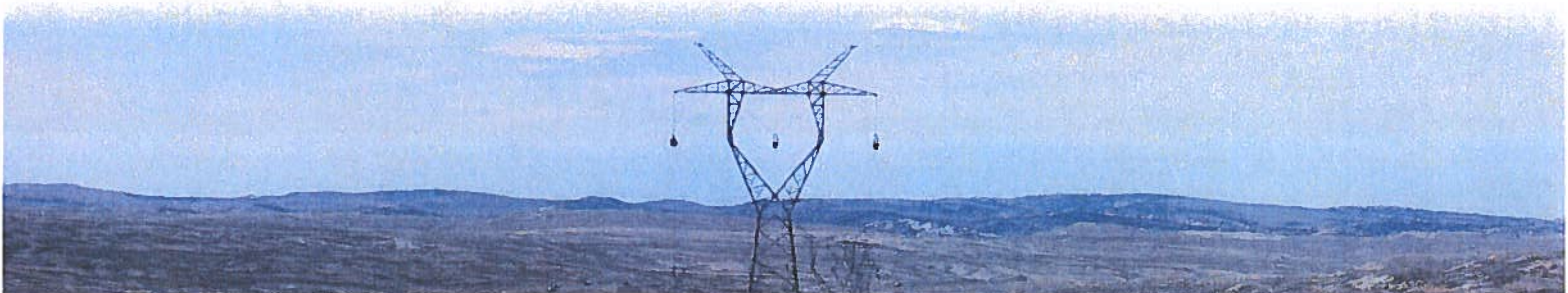
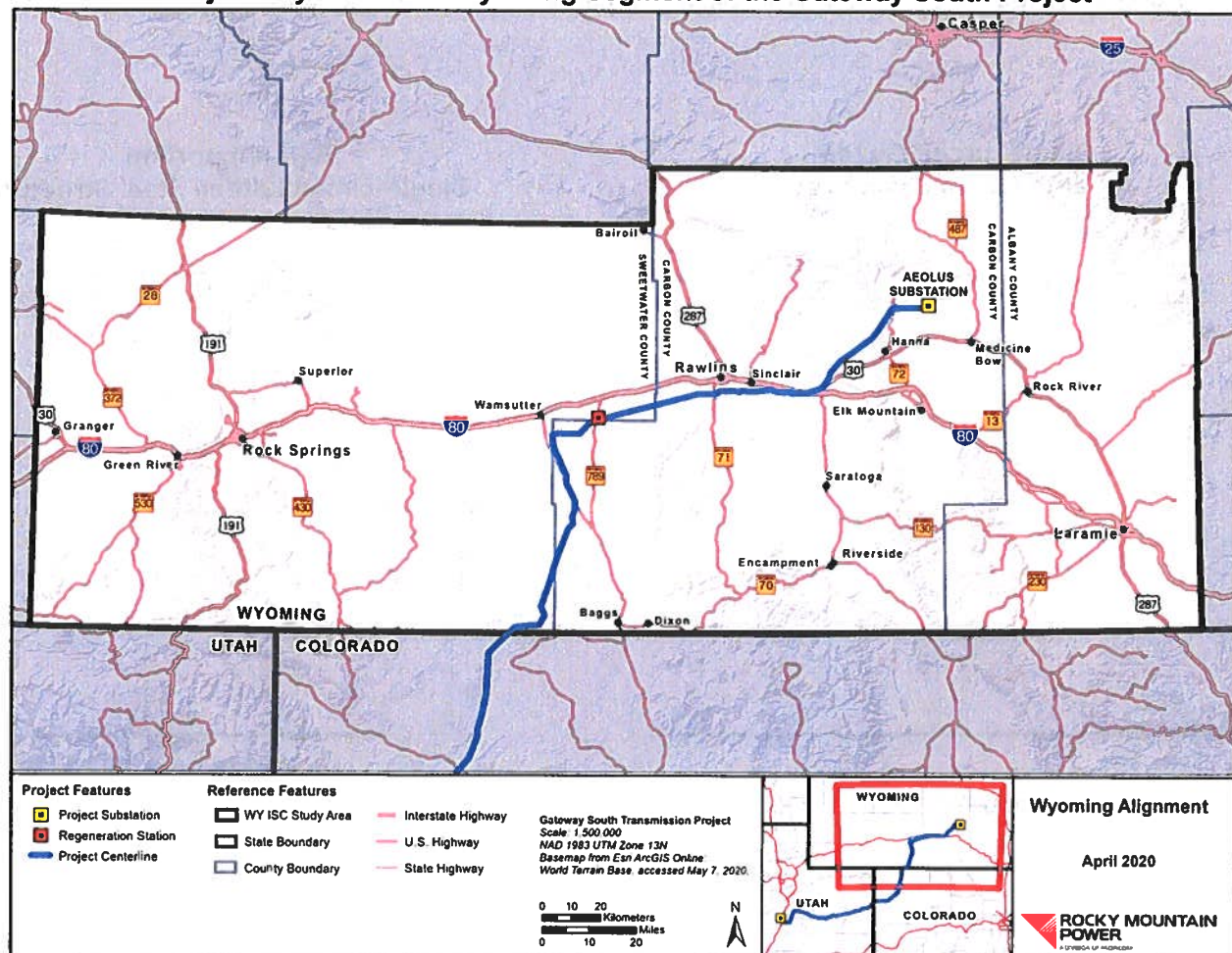
## Project Components

- Aeolus substation expansion (approximately 10 acres) in Carbon County
- Regeneration station east of Wamsutter

### Transmission Line Components by County

Location	Number of Structures	Miles of Transmission Line	Miles of New or Improved Access Roads
Carbon County	419	108	125
Sweetwater County	133	34	56
<b>TOTAL</b>	<b>552</b>	<b>142</b>	<b>181</b>

## Project Layout for the Wyoming Segment of the Gateway South Project





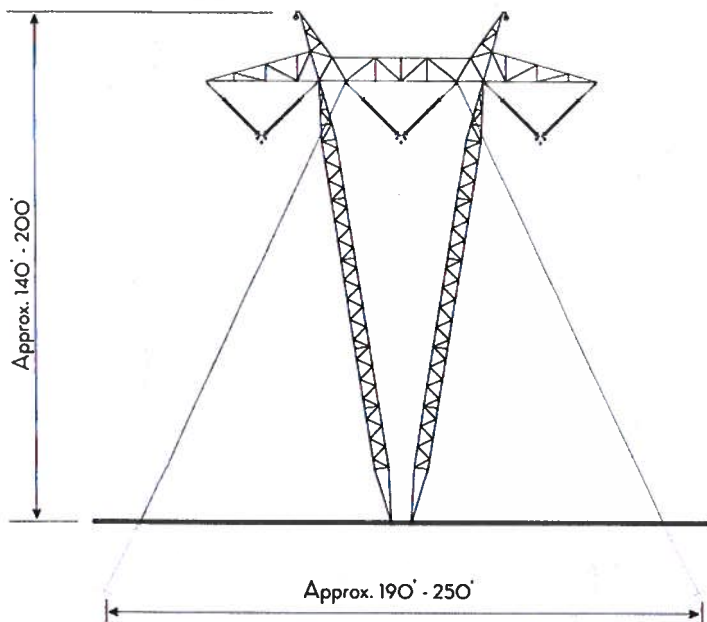
# Transmission Line Components

## Transmission Line Structures and Associated Infrastructure

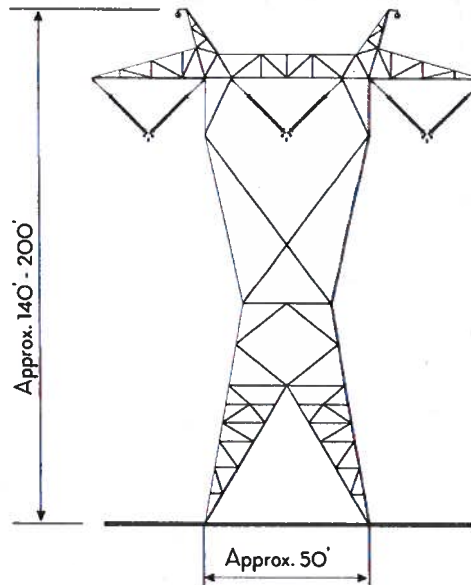
The transmission line circuits will be supported by 500-kV, single-circuit "guyed" lattice steel structures and self-supporting single-circuit lattice steel structures within the Project right-of-way connected by a system of access roads (both new and existing). In general, single-circuit guyed lattice steel structures would be used in Wyoming.

- **Span Length:** The typical distance between structures ranges from 1,000 and 1,800 feet (with an average span length of 1,500 feet).
- **Structure Height:** The single-circuit structures would vary in height from 140 to 200 feet.
- **Right-of-Way:** The right-of-way is 250 feet wide and will be located in a designated transmission line corridor (right-of-way on federal lands was granted by the Bureau of Land Management).
- **Access Roads:** Access roads will typically be between 14 and 22 feet wide.

**Single-circuit Guyed  
Lattice Steel Structure**



**Self-supporting  
Single-circuit Lattice Steel Structure**

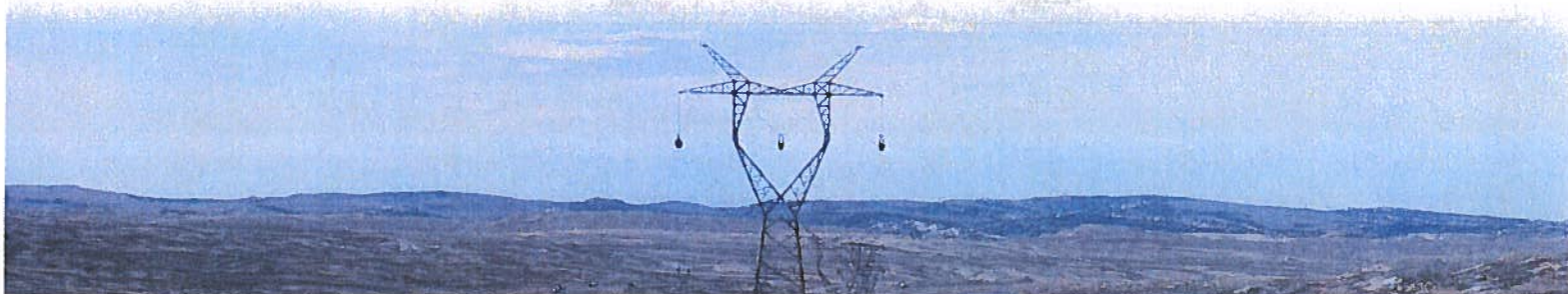


# Aeolus Substation Expansion

The Aeolus substation was permitted on private property owned by Rocky Mountain Power and is currently in construction as part of the Gateway West Transmission Project. The Aeolus substation will be expanded (approximately 10 acres) to accommodate additional equipment for the Gateway South Project. This expansion is contained within private property owned by Rocky Mountain Power. Below are several key items required to support the Aeolus Substation expansion:

- A new line termination bay.
- Addition of two new transformer banks (incorporating seven single-phase units) to permit the transfer of energy from the 230-kV substation to the 500-kV transmission line for long distance transmission.
- Construction of new 230-kV bays within the currently existing and graded substation area.
- Additional associated foundations, structural steel, buswork, equipment, conduits, and cables in the 230-kV and 500-kV yards.

## Aeolus Substation Overview





# Transportation Routes

Most materials needed for construction will be sourced from outside of Wyoming and transported to the Project via rail or truck. Products transported via rail will be offloaded at the existing Rock River and Laramie rail loadout facilities in Albany County. Materials transported via truck will primarily arrive on Interstate 80. From the rail facilities and I-80, materials will be trucked to the Project using major highways (U.S. Highway 30/287 and State Highway 789), secondary road networks, and a system of new and existing access roads. The Project workforce will utilize the same highway routes for commuting and Project-related travel during the workday.

Rocky Mountain Power will follow its Transportation Plan during Project activities to avoid and minimize traffic and transportation-related impacts from construction of the Project and associated access, with specific attention to impacts on:

- Safety
- Local Travel and Traffic
- Roads
- Environmental Resources

## Major Highways Utilized for the Project

- Interstate 80
- State Highway 789
- U.S. Highway 30/287

## Secondary Roads Utilized for the Project

### Laramie to Medicine Bow

- 3rd Street/Highway 30/287
- Carbon County Road 121

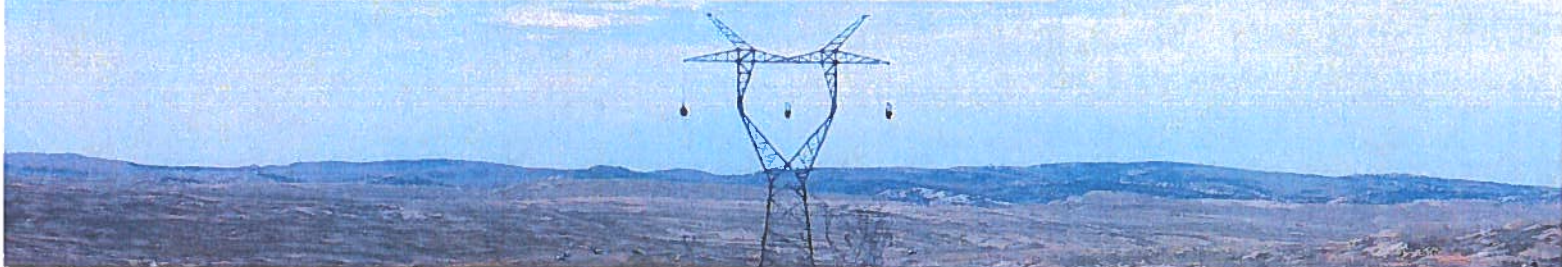
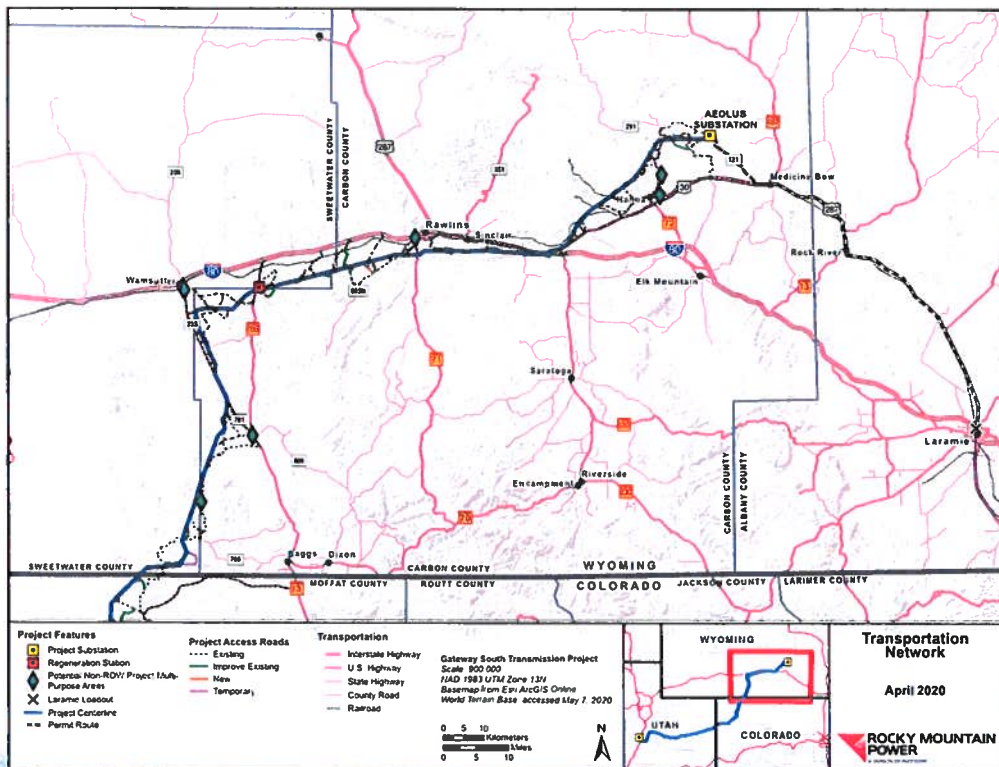
### Rawlins to Wyoming/Colorado Border

- State Highway 71
- Carbon County Road 451
- Carbon County Road 605 North (20 Mile Road)
- Carbon County Road 701 (Wamsutter Road)
- Echo Springs Gas Plant Road
- Eight Mile Lake Road
- Standard Road
- Straten Road
- West Hangout Road
- Daley Road, south of I-80

### Medicine Bow to Rawlins

- Carbon County Road 121
- Carbon County Road 215 North
- Carbon County Road 270
- Carbon County Road 291
- Carbon County Road 297
- Carbon County Road 316
- Carbon County Road 347 South
- Sweetwater County Road 23S (Wamsutter-Crooks Gap Road)
- Colorado Interstate Gas (CIG) Plant Road/Carbon County Road 407
- South Higley Boulevard, south of I-80

Transportation Routes for the Wyoming Segment of the Gateway South Project



# Environmental Resources Studies and Protection Plans

Rocky Mountain Power has extensively studied environmental resources in the Project area and continues to collect data to avoid and minimize impacts to environmental resources during Project construction. The Project has undergone a robust impact analysis and disclosure through the federal National Environmental Policy Act Environmental Impact Statement (EIS) process. Most impacts will be short-term and minor in nature. In conjunction with the EIS process, Rocky Mountain Power has prepared a Project Plan of Development, which contains resource protection plans that will be implemented during construction and operations.

## Resources Evaluated for Project Impacts

- Climate and Air Quality
- Geologic Hazards
- Soil Resources
- Mineral Resources
- Water Resources
- Vegetation (including Special Status Plants)
- Wildlife (including Special Status Wildlife)
- Fish and Aquatic Resources
- Land Use
- Parks, Preservation, and Recreation
- Special Designations and Other Management Areas
- Lands with Wilderness Characteristics
- Visual Resources
- National Trails System
- Fire Ecology and Management
- Cultural and Paleontological Resources

## Resource Protections Plans Included in the Plan of Development for the Gateway South Project

Resource Protection Plan	Description
Biological Resources Conservation Plan	Assists federal land-management agencies and project personnel in meeting the obligations to protect biological resources during the planning, design, and implementation of the project.
Noxious Weed Management Plan	Provides methods to control potential establishment and/or spread of noxious weeds during and following construction.
Water Resources Protection Plan	Provides measures to protect hydrologic resources from potential impacts during construction, maintenance, and operation.
Vegetation Management Plan	Provides direction for foresters, contractors, and PacifiCorp employees for vegetation management. Covers vegetation management techniques for both distribution and transmission.
Erosion, Dust Control, and Air Quality Plan	Addresses regulatory compliance, environmental concerns, mitigation recommendations, and monitoring requirements necessary to ensure impacts associated with construction are minimized as they relate to soil conservation and air quality.
Fire Protection Plan	Details measures implemented to reduce the risk of starting a fire and suppress any fires that do occur.
Environmental and Safety Training Plan	Educates all personnel and visitors on how compliance with all project-specific permitting documents will be met.

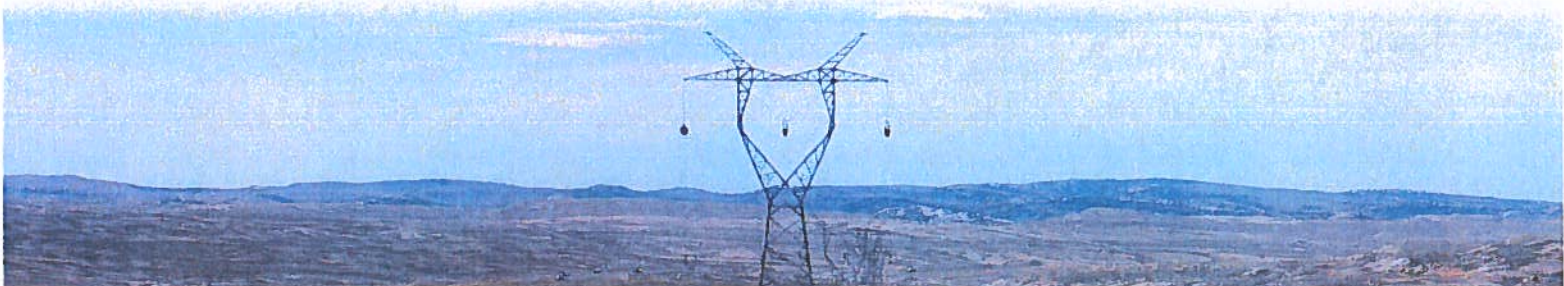
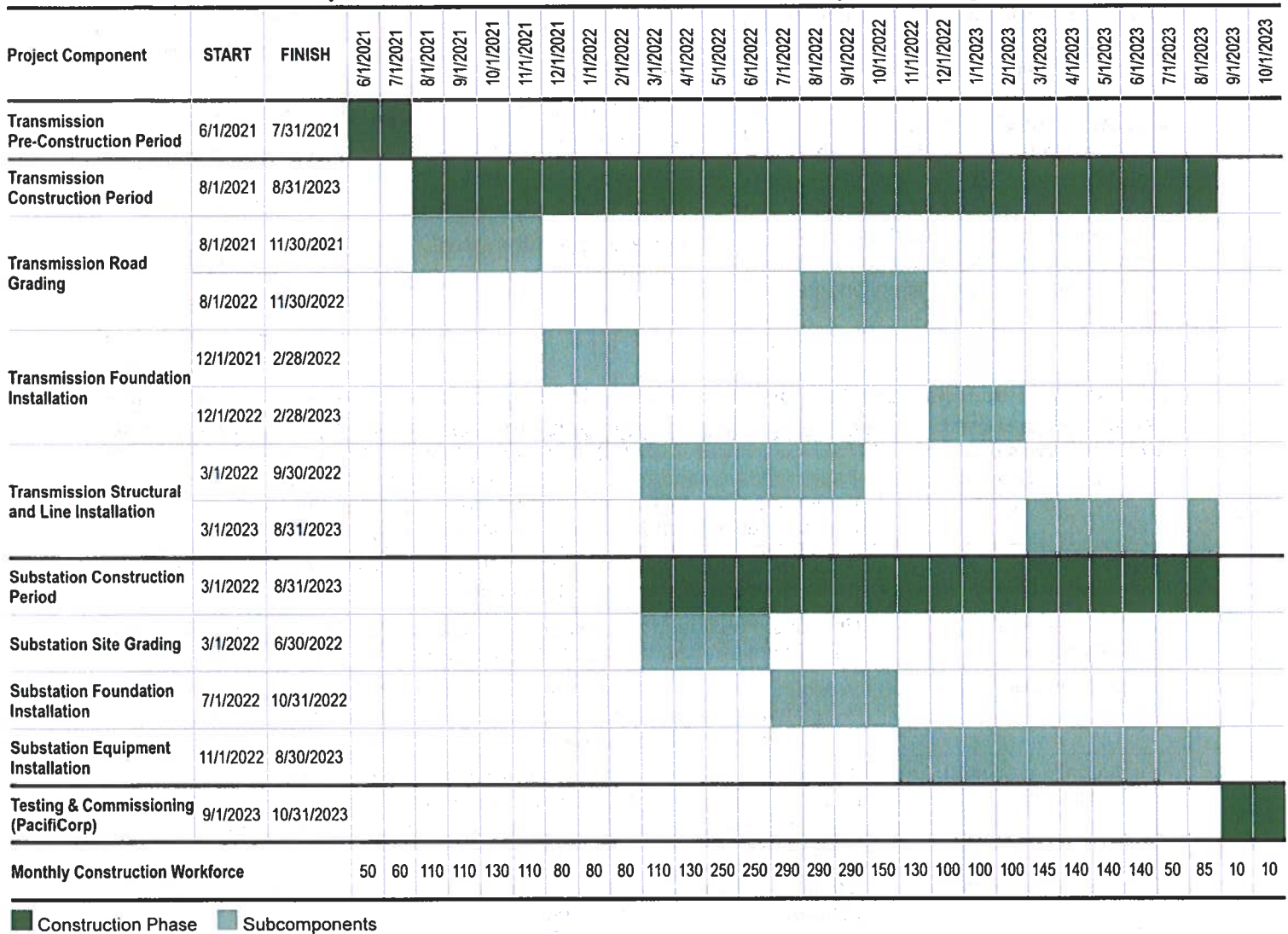




# Anticipated Construction Schedule and Workforce

Rocky Mountain Power anticipates initiating construction of the Wyoming portion of the Gateway South Transmission Line in June 2021 and continuing through August 2023. Expansion of the Aeolus substation will occur between April 2022 and October 2023. Contractors may perform construction over the winter months when weather allows for Project access and a safe work environment.

**Anticipated Construction Schedule for the Gateway South Project**

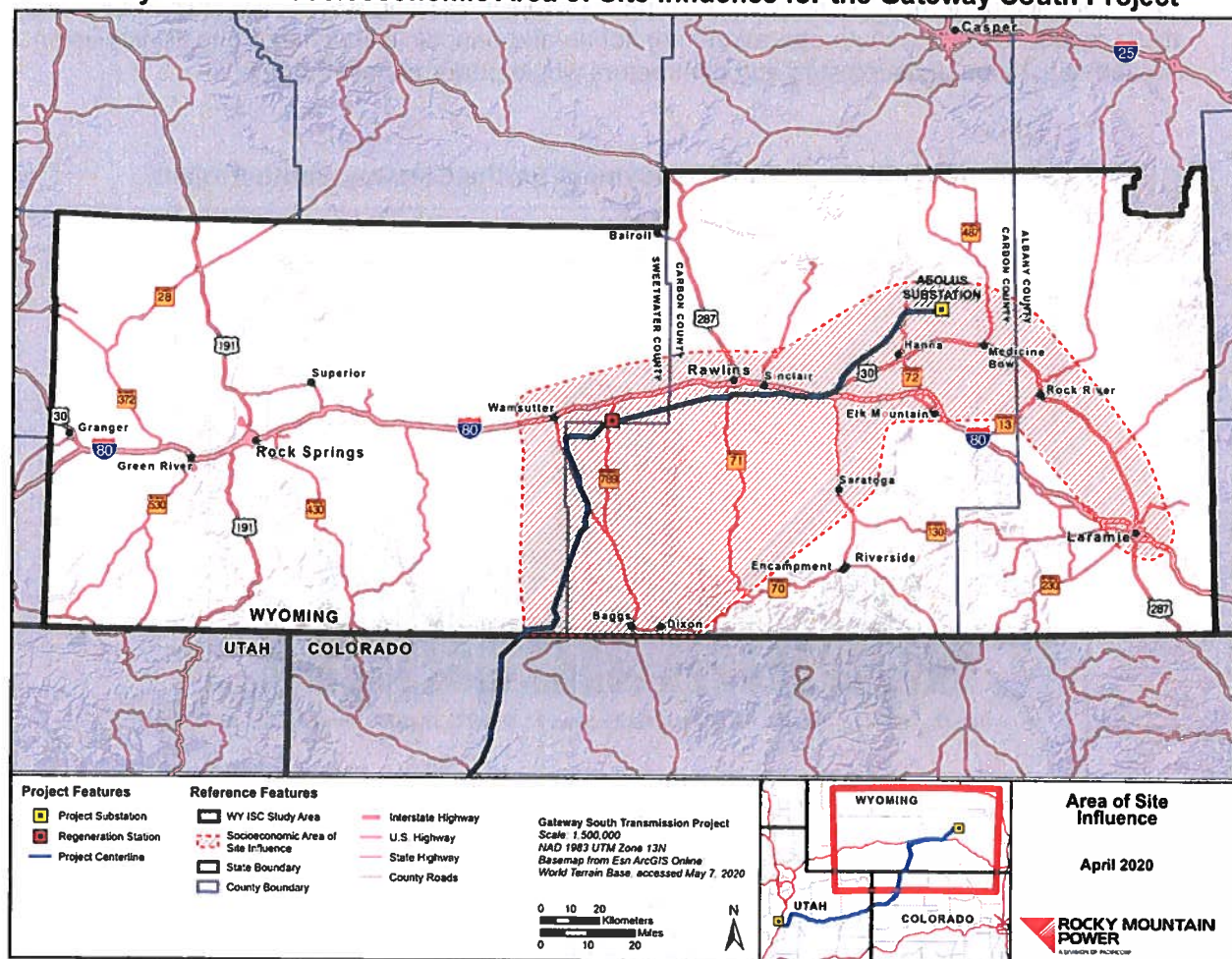




# Study Area and Socioeconomic Area of Site Influence

- The Gateway South Project Study Area is Carbon County, Sweetwater County, and Albany County.
- Rocky Mountain Power has assessed socioeconomic impacts to primarily affected municipalities in the three-county Study Area
- The Area of Site Influence encompasses communities that are likely to experience some social or economic impacts and benefits from the Project. The Area of Site Influence contains the following communities:
  - Carbon County and the municipalities of Rawlins, Hanna, Medicine Bow, Elk Mountain, Saratoga, Sinclair, Baggs, and Dixon
  - Sweetwater County and the municipality of Wamsutter
  - Albany County and the municipalities of Rock River and Laramie

**Study Area and Socioeconomic Area of Site Influence for the Gateway South Project**



# Jobs in Wyoming during Construction and Operations

## Transmission Line Construction

- The transmission line workforce in Wyoming will range from 50 to 230 individuals, averaging about 118 workers during the 26 months of active construction, with a peak monthly workforce of 230 workers from June 2022 through September 2022.

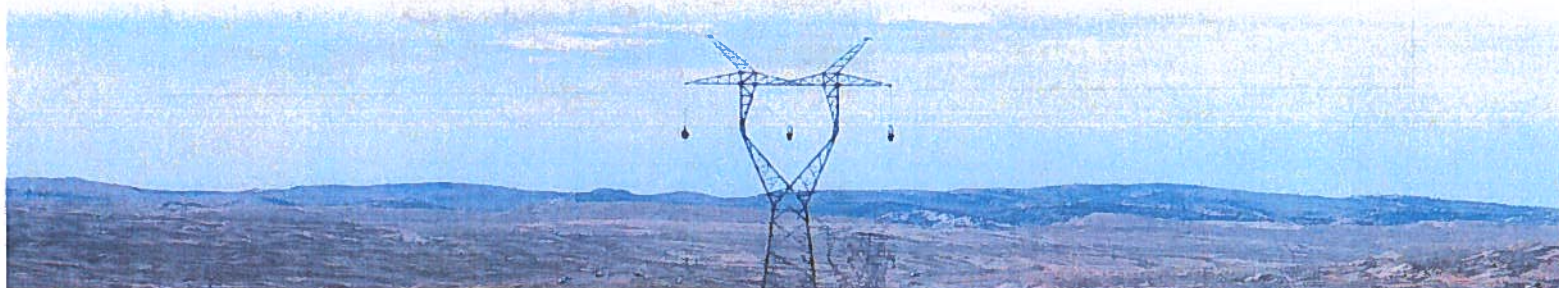
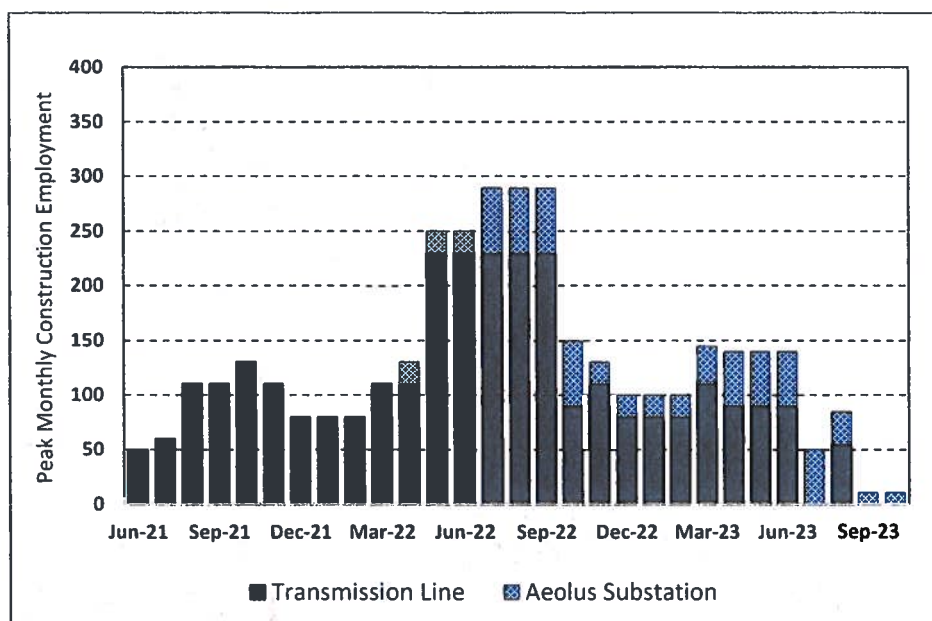
## Aeolus Substation Expansion

- The workforce associated with the minor expansion and equipment installation at the Aeolus substation will average approximately 35 workers during the 19-month construction period, with a peak quarterly workforce of approximately 60 workers in the third quarter of 2022. The Aeolus substation workforce will range from 10 to 60 individuals at any given time.

## Operations

- No additional long-term jobs will be created by the Project. Existing Rocky Mountain Power staff will be responsible for remote operation, monitoring and periodic inspection of the transmission line and substation. Existing staff and contractors would perform maintenance.

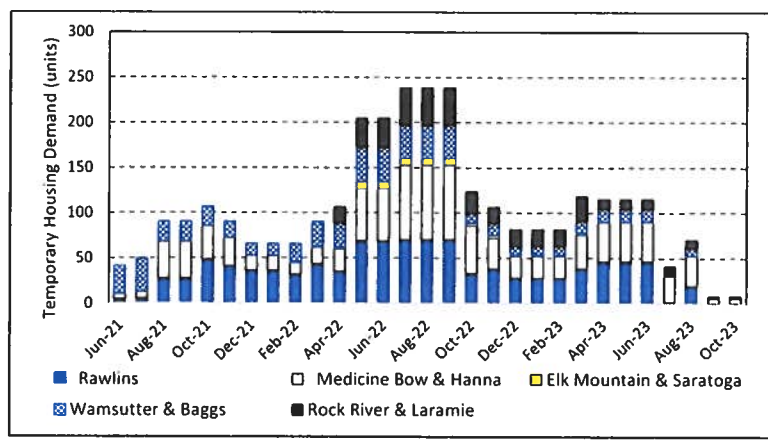
**Peak Monthly Construction Employment for the Gateway South Project**





# Temporary Construction Worker Housing

Housing needs for non-local workers who relocate temporarily to work on the Gateway South Project will average 105 units over the 29-month construction schedule, with a short-term peak of 237 units from July through September of 2022. Housing needs will be substantially lower outside that time period. Average annual housing needs by month are presented in the figure below:



## Average Housing Needs Per Year

● 2021 Average:	76
● 2022 Average:	147
● 2023 Average:	75

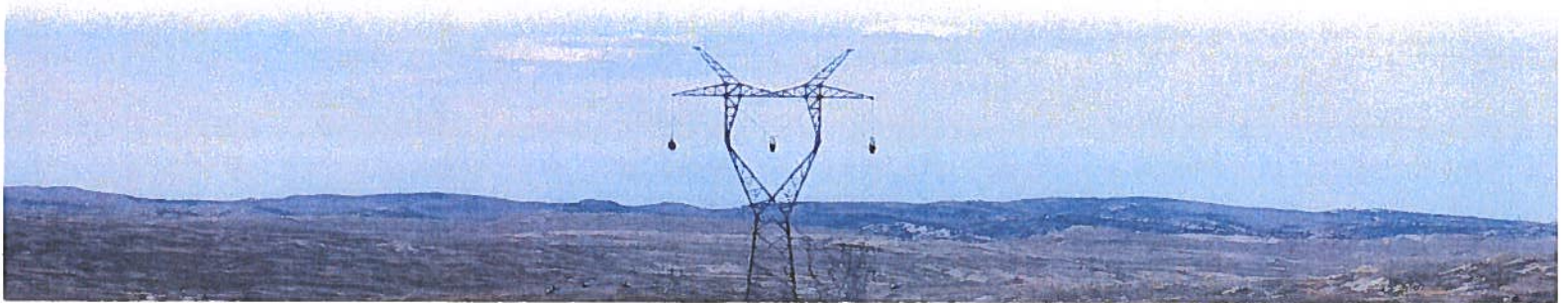
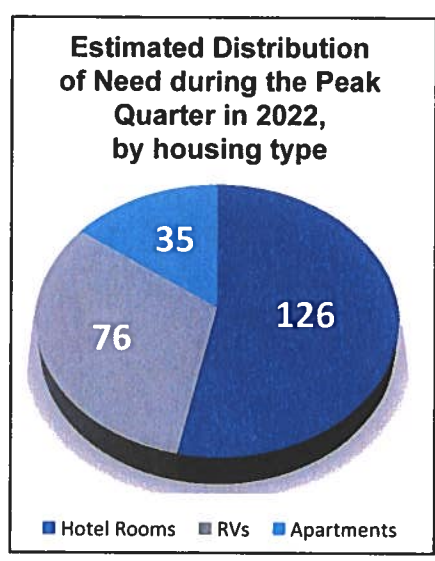
The estimated distribution of housing needs, by selected community groupings over the entire construction schedule is:

Rawlins	36%
Medicine Bow & Hanna	33%
Wamsutter & Baggs	16%
Rock River & Laramie	13%
Elk Mountain & Saratoga	2%

Many construction workers will bring their own RVs and are likely to move between communities as the nexus of work shifts along the transmission line corridor.

More than 3,600 hotel/motel rooms and RV spaces are with the Area of Site Influence. The inventory of temporary housing is adequate to meet the Project's needs even when considering seasonal tourism and travel demands.

In the event of housing shortages due to overall cumulative demand, Rocky Mountain Power will implement its Housing Plan to ensure housing for the Project's workforce.



*VIA U.S. CERTIFIED MAIL – RETURN RECEIPT REQUESTED*

May 15, 2020

Tim Kaumo  
City of Rock Springs  
212 D St.  
Rock Springs, WY 82901

Dear Sir or Madam:

PacifiCorp, conducting business as Rocky Mountain Power (RMP), seeks to develop the Gateway South Transmission Line Project (GWS Project or Project), an extra-high-voltage alternating current transmission line. The approximately 420-mile long, 500-kilovolt transmission line will originate at the existing Aeolus substation northwest of Medicine Bow, Wyoming. From the Aeolus substation, the transmission line will progress southwest through portions of Carbon and Sweetwater Counties, then continue through western Colorado, and central Utah, ultimately terminating at the Clover substation near Mona, Utah. The Project is intended to provide energy transmission capacity throughout the region from new and existing renewable (e.g., wind, solar, and storage) and thermal (e.g., natural gas and coal) sources. The GWS Project aims to meet growing energy demand, relieve transmission congestion, and improve the flow of electricity.

RMP is in the process of applying for an Industrial Siting Section 109 Permit (Permit) to construct and operate the GWS Project pursuant to the Wyoming Industrial Development Information and Siting Act.<sup>195</sup> During a Jurisdictional Hearing on February 18, 2020, the Wyoming Industrial Siting Division determined that the Project is jurisdictional and requires a Permit, defining the Project Study Area as including Albany, Carbon, and Sweetwater Counties (see attached map).

As required by the Wyoming Industrial Development Information and Siting Rules and Regulations<sup>196</sup> (Rules), RMP is sending this notice to each local government entity and school district in the Study Area to provide Project information and notification of an upcoming public informational meeting on May 28, 2020. This notice includes a Project description, Project location, expected construction schedule, estimated number of construction workers needed, transportation routes for construction materials, anticipated socioeconomic and environmental impacts, and anticipated economic benefits from the Project. Additionally, this notice: 1) describes methods to submit comments or questions to RMP, 2) offers details on how to attend the Project informational meeting in May where you can obtain more information and submit comments or questions about the Project, and 3) provides quick-read handouts describing the Project relative to Wyoming.

## **Project Information**

The GWS Project is part of RMP's larger transmission expansion program, called Energy Gateway, which adds new transmission lines to connect new and existing generation resources to customers throughout RMP's service territory. Energy Gateway is composed of several large-scale projects that will address customers' increasing electric energy use and improve system reliability. In addition to approximately 420 miles of new transmission line, the GWS Project will also include the construction of two separate, series-compensation stations between the Aeolus substation in Wyoming and Clover substation in Utah, the construction of a new regeneration station in

---

<sup>195</sup> W.S. 35-12-109

<sup>196</sup> Rules Ch.1, § 5 (b)



Wyoming, and an expansion of the existing Aeolus substation. The Project is designed to independently provide 1,500 megawatts of new transmission capacity to meet forecasted energy demands.

In Wyoming, the Project is located in Carbon County and Sweetwater County and its infrastructure will include a minor expansion at the existing Aeolus substation in Carbon County; construction of a new regeneration station east of Wamsutter; and approximately 142 miles of new transmission line, 552 transmission structures, and 181 miles of new or improved access roads. Approximately 108 miles of the transmission line will be in Carbon County and approximately 34 miles will be in Sweetwater County. The Aeolus substation, transmission line, access roads, and potential locations for multi-purpose yards and the regeneration station are shown on the attached map. The Aeolus substation will be expanded by approximately 10 acres to accommodate additional equipment for the GWS Project. Although neither the Aeolus substation, the regeneration station, nor any segments of the transmission line will be located in Albany County, the county is included in the Study Area based on the potential for Project-related workforce personnel to reside in Rock River and Laramie.

## Transportation Routes

Most materials needed for construction will be sourced from outside of Wyoming and transported via rail or truck to multi-purpose staging and storage yards (potential locations provided in the attached map). Products transported via rail will be offloaded at the Rock River or Laramie rail loadout facilities in Albany County. Materials transported via truck will primarily arrive via Interstate 80 (I-80). From the rail facilities and I-80, materials will be trucked to the Project using major highways (U.S. Highway 30/287 and State Highway 789), secondary road networks, and a system of new and existing access roads. The Project workforce will use the same highways for commuting and intraday Project-related travel. In addition to the major roadways, the following secondary roads will be utilized for material transport and Project access:

### Laramie to Medicine Bow:

- 3rd Street/Highway 30/287
- Carbon County Road 121

### Rawlins to Wyoming/Colorado Border:

- State Highway 71
- Carbon County Road 451
- Carbon County Road 605 North (20 Mile Road)
- Carbon County Road 701 (Wamsutter Road)
- Echo Springs Gas Plant Road
- Eight Mile Lake Road
- Standard Road
- Straten Road
- West Hangout Road
- Daley Road, south of I-80

### Medicine Bow to Rawlins:

- Carbon County Road 121
- Carbon County Road 215 North
- Carbon County Road 270
- Carbon County Road 291
- Carbon County Road 297
- Carbon County Road 316
- Carbon County Road 347 South
- Sweetwater County Road 23S (Wamsutter-Crooks Gap Road)
- Colorado Interstate Gas (CIG) Plant Road/Carbon County Road 407
- South Higley Boulevard, south of I-80

RMP has prepared a Transportation Plan for its employees and construction contractors to follow during Project activities to avoid and reduce the effects of Project-related traffic and transportation on municipalities, environmental resources, roads, travel, and road safety.

## **Construction and Workforce**

RMP anticipates initiating construction of the Wyoming portion of the GWS Project transmission line in June 2021. Construction will occur continuously through August 2023. Expansion of the Aeolus substation will occur between April 2022 and October 2023. Contractors may perform construction over the winter months when weather allows for Project access and a safe work environment.

RMP anticipates that the Project will require several distinct workforces: several crews for the transmission line and one for the Aeolus substation. The number of necessary workers will vary by year and changing seasons of scheduled construction. Over the entire Project construction period, the workforce will average approximately 130 workers in Wyoming. The transmission line workforces in Wyoming will range from 50 to 230 individuals, averaging approximately 118 workers during the 26 months of active construction, with a peak monthly workforce of 230 workers from May 2022 through September 2022. The workforce associated with equipment installation and expansion at the Aeolus substation will average 35 workers during the 19-month construction period, with a peak quarterly workforce of approximately 60 workers in the third quarter of 2022. The Aeolus substation workforce will range from 10 to 60 individuals at any given time. The peak workforce for the Project (transmission line and Aeolus substation combined) will occur from July to September 2022, with approximately 290 workers. RMP encourages its contractors to hire qualified local workers and is considering impacts to housing availability in the Study Area from Project construction and operation.

## **Socioeconomic Summary**

The GWS Project will create direct and indirect economic benefits for communities in Wyoming and specifically those within the Area of Site Influence, which includes Carbon, Sweetwater, and Albany Counties. Regarding direct economic benefits, the Project is expected to generate more than \$97 million in total tax revenues over the 50-year economic life of the Project. Tax revenues will support local and state governments and public education. Additionally, the GWS Project is expected to create approximately \$508 million in energy transmission infrastructure investment in Wyoming, and on average, approximately 130 jobs over 29 months of construction activities. Indirect benefits will include temporary growth in local economies from service and retail businesses that serve the Project workforce. Impacts, such as the demand for temporary housing accommodations, are expected to peak in correlation with the peak workforce, specifically from July 2022 through September 2022. Housing needs for non-local workers who relocate temporarily to work on the GWS Project will average 105 units over the 29-month construction schedule, with a short-term peak of 237 units from July through September of 2022. The communities of Rawlins and Medicine Bow are forecasted to have the highest demand in temporary housing units during peak Project construction. In the event of housing shortages due to overall cumulative demand, RMP will implement its Housing Plan to ensure housing for the Project's workforce.

## **Environmental Summary**

RMP designed the GWS Project to avoid and minimize impacts to environmental resources to the extent practicable and to comply with federal, state, and local environmental standards. The Project has undergone a robust impact analysis and disclosure through the federal National Environmental Policy Act and associated Environmental Impact Statement (EIS) process. In conjunction with the EIS process, RMP has prepared a Project Plan of Development, which contains resource protection plans that RMP will implement during Project activities to protect environmental resources such as wildlife, water, and recreation. RMP will acquire and follow all necessary permits and approvals to further reduce impacts to the environment. Current land uses are compatible with Project construction and operation, and any disturbances in land use are expected to be localized and short term.

RMP has extensively studied environmental resources in the Project area and is conducting pre-construction field surveys to identify protected resource locations and to comply with federal, state, and local regulations during



Project activities. RMP will abide by seasonal wildlife restrictions during Project activities and will obtain water use agreements with landowners with existing water rights or obtain water from commercial or municipal sources so there will be no new depletions to surface water or groundwater. The Project is not anticipated to exceed air quality standards during Project activities. Most impacts to environmental resources are anticipated to be minor and short term, and will not cause adverse effects to the resources.

### **Informational Meeting and Communication**

RMP will host an informational meeting about the Project on May 28, 2020, starting at 2:00 p.m. Due to Coronavirus Disease 2019 (COVID-19), this meeting will be held online (webinar), but can also be accessed by telephone. Information to attend this meeting is below. Any member of the public, or public official, is welcome to attend this informational meeting by registering for the online webinar on the Project webpage (see the webpage below) or calling in by telephone. If you prefer to view the presentation, and have internet access, the webinar format is suggested. The quick-read handouts attached to this letter contain additional Project information that will be discussed during the informational meeting. Meeting participants will have the opportunity to hear about the Project, ask questions or discuss concerns in real time, and are encouraged to provide comments about the Project both during and after the informational meeting.

Information to attend the online (webinar) informational meeting is as follows:

**Project webpage with webinar information:** <http://www.pacificorp.com/gatewaysouth>

**Telephone Call-in Number:** 720-928-9299 or 888-475-4499 (Toll Free)

**Telephone Call-in Passcode:** 961-5104-0731

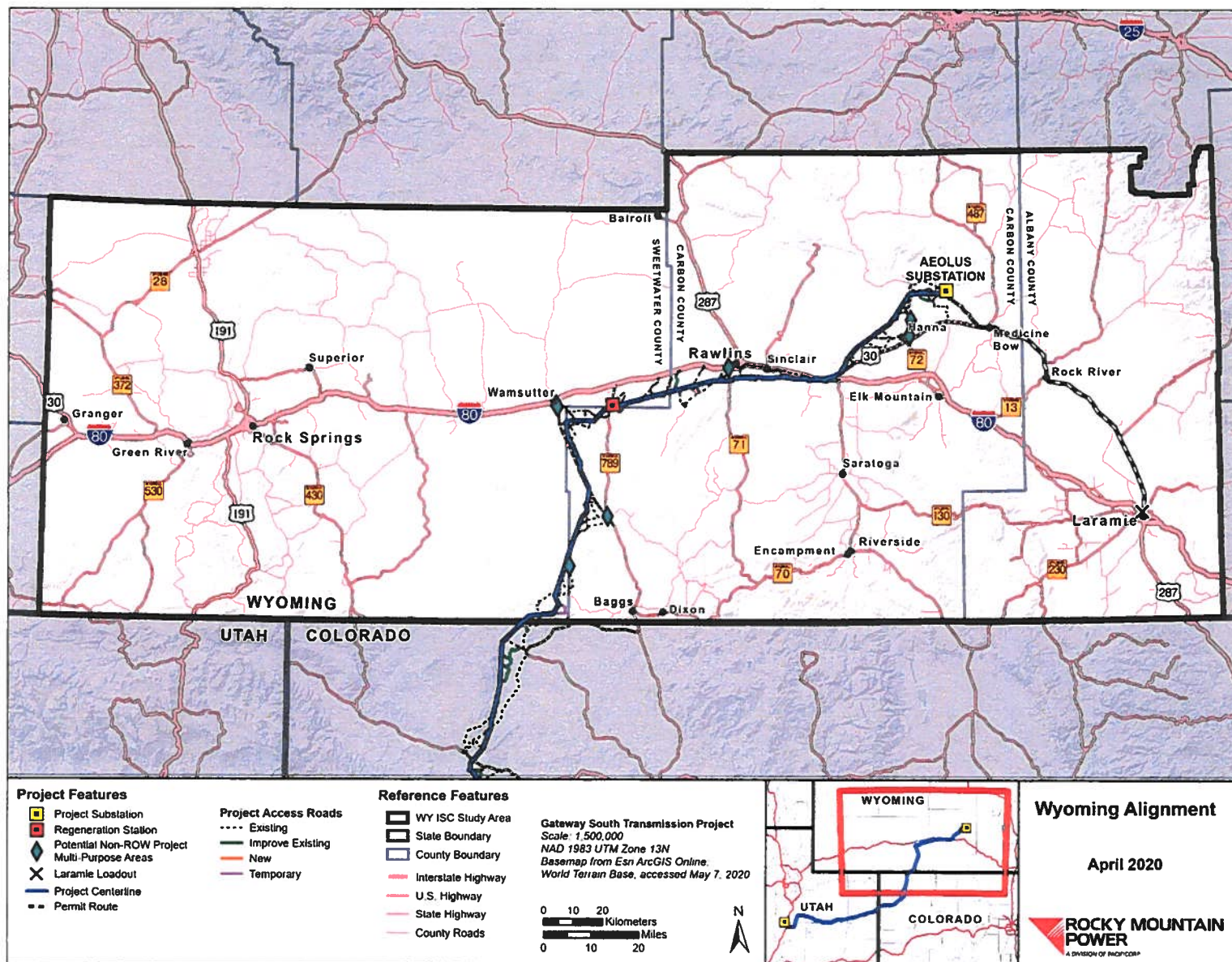
For your convenience, a comment form and addressed envelope are enclosed for you to submit comments or questions to RMP. Additional resources for the Project and a link to register for the online webinar option for the informational meeting are provided on the Project webpage noted above. Local officials and members of the public are encouraged to address written comments about the Project to the following address for RMP's consideration by June 15, 2020.

SWCA Environmental Consultants  
Attn: Mary Huisenga - Wyoming Industrial Siting Comments  
295 Interlocken Blvd., #300  
Broomfield, CO 80021

Sincerely,



Rod Fisher  
Rocky Mountain Power



GWS Project layout and Study Area in Wyoming.



*This page is intentionally left blank.*

Your Name: Timothy A. Kaumo  
Organization (if applicable): City of Rock Springs  
Title: Mayor  
Address: 212 D Street  
Rock Springs, WY 82901

Please consider the following comments on Rocky Mountain Power's proposed Gateway South Transmission Line Project:

See attached.

Signature: 

Date: 5/27/2020

Please submit this comment form in the enclosed envelope and add postage by June 15, 2020. The envelope is addressed and should be mailed to:

SWCA Environmental Consultants  
Attn: Mary Huisenga - Wyoming Industrial Siting Comments  
295 Interlocken Blvd., #300  
Broomfield, CO 80021

For additional information, please visit <http://www.pacificorp.com/gatewaysouth>





---

**Timothy A. Kaumo, Mayor**  
212 D Street, Rock Springs, WY 82901  
(307) 352-1510 · Fax (307) 352-1516

May 27, 2020

SWCA Environmental Consultants  
Gateway South Project  
Attn: Mary Huisenga – Wyoming Industrial Siting Comments  
295 Interlocken Blvd., #300  
Broomfield, CO 80021

Dear Ms. Huisenga,

As Mayor of the City of Rock Springs, Wyoming, I offer my support for this project which will improve the flow of electricity throughout the region. Growing energy demand is constantly a topic of discussion at our economic development planning meetings. The City of Rock Springs has potential to grow in the near future and plans are already in the works for new business opportunities that will more than likely seek power from this source and which will also increase our tax revenue generation here in Wyoming and Sweetwater County.

That being said, I am very familiar with these large construction projects which have occurred over many years. I am concerned that the Study Area which has been outlined in regards to the "Socioeconomic Area" does not include Rock Springs, which is the hub of most business within Sweetwater County. Rock Springs has many restaurants, hotels/motels, shopping centers, hospitals, and recreational opportunities necessary for the many transient workers who will be working on the project. Rock Springs is located within 75 miles of the project and many of the materials and labor will be coming from the west I would assume, right through our City. Rock Springs has also has rail yards/laydown yards and truck transports, which operate and serve many industries here in Sweetwater County and into our neighboring counties. That being said, Rock Springs will surely see workers living in and utilizing all the necessities which are required during the construction period. I would imagine that a large portion of the labor would be hired from Rock Springs as well, as we have a very skilled workforce here in Rock Springs with many tradesmen ready to work.

It is my request that you consider Rock Springs a part of the socioeconomic area of the project. With a population of approximately 32,000 people and one of the largest cities



---

**Timothy A. Kaumo, Mayor**  
212 D Street, Rock Springs, WY 82901  
(307) 352-1510 · Fax (307) 352-1516

in Wyoming, it is realistic to conclude that Rock Springs will play an important role in the success of this project.

I appreciate your time and consideration and wish success and support for this important project.

Sincerely,

A handwritten signature in black ink, appearing to read "Timothy A. Kaumo", written in a cursive style.

Timothy A. Kaumo  
Mayor, City of Rock Springs, Wyoming